



# GroundTuff® Enviro

GroundTuff Enviro is an economically moulded temporary ground protection solution. Manufactured from 95% recycled PVC, engineered to perform in challenging environments.

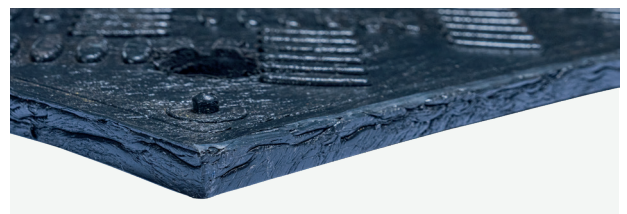
Engineered to support loads up to 100 tonnes\* and designed with a 6-bar chequer plate finish on both sides, supports safe use for pedestrians, machinery and plant whilst providing non-slip properties.

Designed to be compatible with our full range of 2-way and 4-way connectors, mats fix together with ease, with integrated handholds that allow for fast layout, whilst permitting relocation, making them versatile for various applications.

\*Load bearing capacity is dependent on ground conditions and load characteristics.

## Features

- ◆ **Typical applications:** Construction sites, outdoor markets & events, temporary parking solution, outdoor recreation & sport events, access routes, camping and outdoor stages.
- ◆ **Material:** 95% recycled plastics.
- ◆ **Cleaning:** Using a stiff brush will usually remove most dirt and debris. For more stubborn dirt, a pressure washer can be used.
- ◆ **Sustainability:** REACH.



For more information about this product or, to place an order [click here](#)  
Please note, the ground beneath the matting must be structurally sound and free from significant depressions, such as potholes, as these can cause the matting to crack or become damaged.

| Code                                | Metric          | Imperial | Thickness | Weight | Colour |
|-------------------------------------|-----------------|----------|-----------|--------|--------|
| GP4896BL-15                         | 1230mm x 2430mm | 4' x 8'  | 15mm      | 44kg   | Black  |
| GPCG-2 - 2-way Galvanised Connector | 191mm x 15mm    | 8" x 1"  | 4.5mm     | 0.1kg  | Galv   |
| GPCG-4 - 4-way Galvanised Connector | 191mm x 140mm   | 8" x 6"  | 4.5mm     | 0.2kg  | Galv   |
| GPCB-2 - 2-way Standard Connector   | 180mm x 60mm    | 7" x 2"  | 3.5mm     | 0.1kg  | Black  |

## Our delivery promise

We guarantee your order will be shipped on time, every time.  
That's the Blue Diamond difference.

V1.04.26

## Get in touch

+44 (0) 1779 841 899  
sales@bluediamond.uk.com  
www.bluediamond.uk.com

# GroundTuff® Enviro

| Code                                  | Metric        | Imperial   | Thickness | Weight | Colour |
|---------------------------------------|---------------|------------|-----------|--------|--------|
| GPCB-4 - 4-way Standard Connector     | 195mm x 195mm | 8" x 8"    | 3mm       | 0.1kg  | Galv   |
| GPCT Heavy Duty Cable Tie Pack of 100 | 450mm x 9mm   | 18" x 0.4" |           | 0.8kg  | Black  |

Please note, all Imperial sizes have either been rounded up or down to the nearest whole number

## Technical Specification

|                      |   |
|----------------------|---|
| Slip resistant:      | Excellent slip resistance to level 3  |
| Wear resistant:      | Excellent wear resistance to level 3, suitable for heavy footfall             |
| Chemical resistant:  | Yes, resistant to most chemicals, grease, and oils                            |
| Connectable:         | Mats are connectable to create any shape or size                              |
| Disability friendly: | The pedestrian surface (4-bar chequer plate) is suitable for wheelchair users |
| Dry area:            | Yes   |
| Wet area:            | Yes   |
| Heavy area:          | Yes   |
| Wheeled area:        | Yes   |
| Environment:         | Suitable for indoor and outdoor use   |
| Forklifts:           | Yes   |
| Impact resistant:    | Yes   |

# GroundTuff® Enviro

## Technical Specification

|                                 |   |
|---------------------------------|---|
| Product testing:                | ◆ Physical properties                                 |
|                                 | ◆ Density g/cm <sup>3</sup> (ISO 1183-2)              |
|                                 | ◆ Water Absorption 0,06 (ISO 62%)                     |
|                                 | ◆ Mechanical properties                               |
|                                 | ◆ Surface Hardness 32 Shore D (ISO 59)                |
|                                 | ◆ Tensile Strength Mpa 21,9 (ISO527)                  |
|                                 | ◆ Elongation at Break 5,3% (ISO527)                   |
|                                 | ◆ Impact Resistance 5,55 kj/m <sup>2</sup> (ISO 179)  |
|                                 | ◆ Bending Resistance No Break MPa (ISO178)            |
|                                 | ◆ Compression (Pressure) Resistance >58 MPa (ISO 604) |
|                                 | ◆ Impact Elasticity 15% (ISO 4662)                    |
|                                 | ◆ Electrical properties                               |
|                                 | ◆ Electric Resistivity 7,5 MOhm (ISO257)              |
| ◆ Melting Point 121C (ISO11357) |   |

|                 |   |
|-----------------|---|
| Sustainability: | REACH (Registration, Evaluation, Authorisation and Restrictions of Chemicals) |
|-----------------|---|

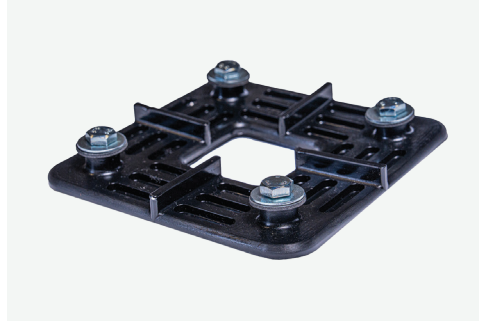
|           |   |
|-----------|---|
| Cleaning: | Using a stiff brush will usually remove most dirt and debris. For more stubborn dirt, a pressure washer can be used |
|-----------|---|

# GroundTuff® Enviro

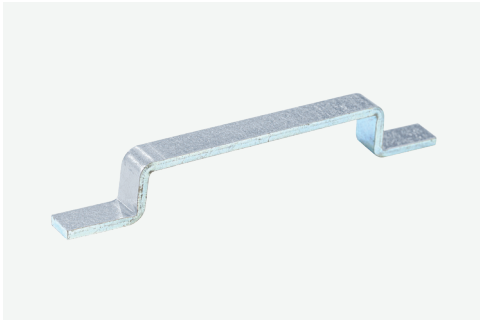
## Compatible Connectors



2-way Standard Connector



4-way Standard Connector



2-way Galvanised Connector



4-way Galvanised Connector



Heavy Duty Cable Ties