

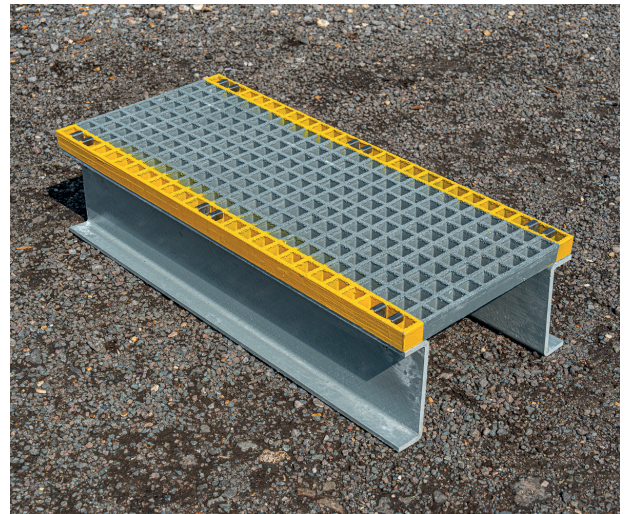
# GRP Step Over Platform

Our GRP Step Over is designed to provide immediate safety by eliminating trip hazards associated with low-lying obstacles such as pipework, cables, and much more. Manufactured in-house and constructed from our high-quality GRP materials, with yellow edging to enhance visibility, this free-standing design can be used on its own or integrated into a larger access system.

Durable, lightweight, and corrosion-resistant, our platforms are built to last, ensuring your team's safety. Suitable for both indoor and outdoor, they are available in a range of lengths, widths, and clearance heights, and can also be made bespoke to suit your individual needs.

## Features

- ◆ **Typical applications:** Perfect for safely navigating over obstacles such as pipes, cables, and equipment in industrial facilities, rooftops, utility plants, and construction sites.
- ◆ **Material:** GRP - Glass reinforced polyester, the grating has a resin coated gritted surface.
- ◆ **Cleaning:** Use of a stiff brush will normally be sufficient to remove everyday dirt and debris, and for more stubborn dirt a mild detergent with warm water is often effective. A pressure washer on a low pressure setting can be used to clean the GRP.
- ◆ **Sustainability:** REACH compliant.
- ◆ **Warranty:** Lifetime.



Suitable for  
indoor and outdoor use



For more information about this product or, to place an order [click here](#)

Code	Size	Weight	Colour
G-SP1839-138GY	464 x 996 x 138mm (100mm clearance)	13.60kg	Grey/Yellow
G-SP1839-188GY	464 x 996 x 188mm (150mm clearance)	16.90kg	Grey/Yellow
G-SP1839-238GY	464 x 996 x 238mm (200mm clearance)	19.70kg	Grey/Yellow
G-SP2348-138GY	578 x 1220 x 138mm (100mm clearance)	19.40kg	Grey/Yellow
G-SP2348-188GY	578 x 1220 x 188mm (150mm clearance)	23.40kg	Grey/Yellow
G-SP2348-238GY	578 x 1220 x 238mm (200mm clearance)	26.85kg	Grey/Yellow

## Our delivery promise

We guarantee your order will be shipped on time, every time.  
That's the Blue Diamond difference.

V1.08.24

## Get in touch

+44 (0) 1779 841 899  
sales@bluediamond.uk.com  
www.bluediamond.uk.com

# GRP Step Over Platform

Code	Size	Weight	Colour
G-SP3939-138GY	996 x 996 x 138mm (100mm clearance)	23.90kg	Grey/Yellow
G-SP3939-188GY	996 x 996 x 188mm (150mm clearance)	27.20kg	Grey/Yellow
G-SP3939-238GY	996 x 996 x 238mm (200mm clearance)	30.10kg	Grey/Yellow
G-SP4848-138GY	1220 x 1220 x 138mm (100mm clearance)	34.60kg	Grey/Yellow
G-SP4848-188GY	1220 x 1220 x 188mm (150mm clearance)	38.60kg	Grey/Yellow
G-SP4848-238GY	1220 x 1220 x 238mm (200mm clearance)	42.10kg	Grey/Yellow

Please note, cutting tolerance +/- 5mm

## Technical Specification

Slip resistant:	Excellent slip resistance to level 3
Wear resistant:	Excellent wear resistance to level 3, suitable for heavy footfall
Chemical resistant:	Yes
Cut to size:	Yes
Cut to length:	Yes
Dry area:	Yes
Wet area:	Yes
Oily and greasy area:	Yes
Environment:	Suitable for indoor and outdoor use
Flame retardant:	Yes
Impact resistant:	Yes
Non-conductive (Electrical):	Yes

# GRP Step Over Platform

## Technical Specification

Non-conductive (HV Electrical): Yes

### GRP Grating

- ◆ Slip resistance
  - ◆ Tested to BS 7976.2 - PTV 'Extremely Low' for wet and dry conditions, PTV 'Low' for oily and greasy conditions
  - ◆ Coefficient of Friction (CoF): Dry 72; Wet 68 and Oil 63
- ◆ Fire certificate
  - ◆ Standard ISO Resin - BS 476 Part 7 Class 2
  - ◆ ASTM-E84 Flame Spread 25, Smoke Density 325
- ◆ Load certificate
  - ◆ BS EN 124 – Class A15
- ◆ UV certificate
  - ◆ UV Weather ISO 4892-2 Xenon Arc 5000hrs

Product testing:

### GRP Angle Profile

- ◆ Tensile Strength - 220Mpa - ASTM D1037-93
- ◆ Modulus of Elasticity - 21Gpa - ASTM D1037-93
- ◆ Flexural Strength - 280Mpa - ASTM D1037-93
- ◆ Compressive Strength - 145Mpa - ASTM D1037-93
- ◆ Flammability resistance - BS 476 Part 7

Sustainability: REACH (Registration, Evaluation, Authorisation and Restrictions of Chemicals)

Temperature resistance: -50°C to +110°C

UV Resistant: Yes

# GRP Step Over Platform

## GRP Chemical Resistance Chart

Environment	%Conc.	Max.Oper. Temp.F/C.	Environment	%Conc.	Max.Oper. Temp.F/C.
Acetic Acid	50	125/52	Lithium Chloride	SAT	150/66
Aluminum Hydroxide	100	160/71	Magnesium Chloride	ALL	170/77
Ammonium Chloride	ALL	170/77	Magnesium Nitrate	ALL	140/60
Ammonium Bicarbonate	15	125/52	Magnesium Sulphate	ALL	170/77
Ammonium Hydroxide	28	N/R	Mercuric Chloride	100	150/66
Ammonium Sulphate	ALL	170/77	Mercurous Chloride	ALL	140/60
Benzene	ALL	N/R	Nickel Chloride	ALL	170/77
Benzoic Acid	SAT	150/66	Nickel Sulphate	ALL	170/77
Borax	SAT	170/77	Nitric Acid	20	70/21
Calcium Carbonate	ALL	170/77	Oxalic Acid	ALL	75/24
Calcium Nitrate	ALL	180/82	Perchloric Acid	10	N/R
Carbon Tetrachloride	100	N/R	Phosphoric Acid	100	120/49
Chlorine Dry Gas	-	140/60	Potassium Chloride	ALL	170/77
Chlorine Water	SAT	80/27	Potassium Dichromate	ALL	170/77
Chromic Acid	5	70/21	Potassium Sulphate	ALL	170/77
Citric Acid	ALL	170/77	Propylene Glycol	ALL	170/77
Copper Chloride	ALL	170/77	Sodium Acetate	ALL	160/71
Copper Cyanide	ALL	170/77	Sodium Bisulphate	ALL	170/77
Copper Nitrate	ALL	170/77	Sodium Bromide	ALL	170/77
Ethanol	50	75/24	Sodium Cyanide	ALL	170/77
Ethylene Glycol	100	90/32	Sodium Hydroxide	N/R	N/R
Ferrous Chloride	ALL	170/77	Sodium Nitrate	ALL	170/77
Formaldehyde	50	75/24	Sodium Sulphate	ALL	170/77
Glucose	100	170/77	Stannic Chloride	ALL	160/71
Gasoline	100	80/27	Sulfuric Acid	25	75/24
Glycerine	100	150/66	Tartaric Acid	ALL	170/77
Hydrobromic Acid	50	120/49	Vinegar	100	170/77
Hydrochloric Acid	37	75/24	Water Distilled	100	170/77
Hydrogen Peroxide	5	100/38	Zinc Nitrate	ALL	170/77
Lactic Acid	ALL	170/77	Zinc Sulphate	ALL	170/77