



# Dynamat

Dynamat is a heavy duty, premium quality loose-lay floor mat that offers excellent shock absorption qualities and exceptional resistance to wear. Available in two thickness, 10mm and 17mm, Dynamat is a virtually indestructible dense rubber mat, used to protect floors and provide insulation for the most demanding applications. The wide ribbed pattern on the reverse allows drainage, whilst the dense rubber textured anti-slip surface, makes Dynamat the perfect solution for industrial sites, gyms, stables, kennels, livery enclosures, dog grooming areas, golf courses, ice rinks and much more.

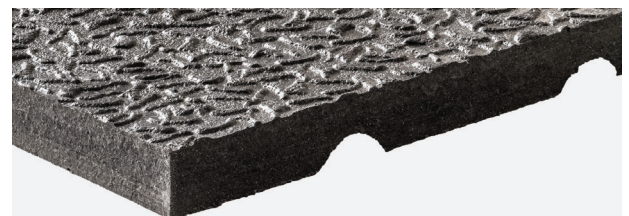
## Features

- ◆ **Typical applications:** Perfect for areas which need heavy duty, long-lasting matting such as sports facilities, ice skating rinks, horse stables, kennels, livery enclosures, animal grooming areas, agricultural buildings, or industrial sites.
- ◆ **Material:** Natural and recycled rubber.
- ◆ **Cleaning:** Wash with cold water, use vacuum cleaner, or use a pressure pump to remove dirt.
- ◆ **Sustainability:** Nature friendly, biodegradable and recyclable. REACH compliant. Contributes to a cleaner environment by reducing the need to use cleaning chemicals.
- ◆ **Warranty:** Lifetime.

Suitable for use indoor and sheltered areas



For more information about this product or, to place an order [click here](#)



Code	Metric	Imperial	Thickness	Weight	Colour
DM10	120cm x 180cm	4' x 6'	10mm	24kg	Black
DM17	120cm x 180cm	4' x 6'	17mm	38kg	Black

Please note, all Imperial sizes have either been rounded up or down to the nearest whole number

## Our delivery promise

We guarantee your order will be shipped on time, every time.  
That's the Blue Diamond difference.

V3.11.23

## Get in touch

+44 (0) 1779 841 899  
sales@bluediamond.uk.com  
www.bluediamond.uk.com

# Dynamat

## Technical Specification

Slip resistant: Great slip resistance to level 2

Anti-fatigue: Good anti-fatigue properties, resistant to level 1

Wear resistant: Excellent wear resistance to level 3, suitable for heavy footfall

Dry area: Yes

Heavy area: Yes

Environment: Suitable for use in indoor and sheltered areas

Impact resistant: Yes

Product testing:

- ◆ Tensile strength: 3-3.5 Mpa
- ◆ Hardness: 60+ Shore A
- ◆ DIN abrasion loss mm<sup>3</sup>: 250-300
- ◆ Elongation at break: 200-250%

Sustainability:

- ◆ Nature friendly, biodegradable and recyclable
- ◆ REACH (Registration, Evaluation, Authorisation and Restrictions of Chemicals)
- ◆ Contributes to a cleaner environment by reducing the need to use cleaning chemicals

Temperature resistance: -20°C to +130°C

Cleaning:

Wash with cold water, use vacuum cleaner, or use a pressure pump to remove dirt. The use of hard detergents is not recommended