



Tuff-Tile HD Textured



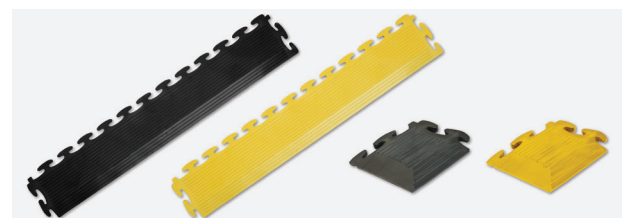
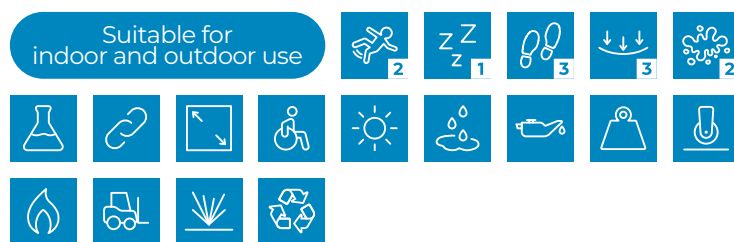
Tuff-Tile HD Textured is a heavy duty, tough, non-slip interlocking tile system designed to provide excellent durability and comfort. Resistant to most chemicals and solvents, Tuff-tile HD Textured also offers total protection to existing floors by reducing damage caused by impact, abrasion, and vibration. For use both indoors and outside, wet and dry environments, the tiles are suitable for fork trucks, pallet trucks, stillages and heavy loads as well as for wheelchairs, pushchairs, and trolleys. The tiles are easy and quick to assemble due to their unique interlocking joint. With an overall height of 7mm, bevel edges are needed to create the ramped edge, plus corner tiles to ensure a secure fit.

Features

- ◆ **Typical applications:** An extremely hard-wearing mat ideal for use in manufacturing plants, assembly lines, picking, packing and logistics warehouses, individual workstations, garages, workshops, warehouses, factories, as temporary floor protection, schools, exhibitions and events, residential areas and sport and leisure facilities.
- ◆ **Material:** 100% recycled PVC.
- ◆ **Cleaning:** Wash with cold water and a mild detergent. The use of harsh detergents is not recommended.
- ◆ **Sustainability:** Recyclable material. REACH and RoHS compliant.
- ◆ **Warranty:** Lifetime.



Black in stock, other colours available on request. Bevels available in both black and yellow



For more information about this product or, to place an order [click here](#)

Code	Metric	Imperial	Thickness	Weight	Type	Per	Colour
TT2020BL	50cm x 50cm	2' x 2'	7mm	2.4kg	Tile	(single)	Black
TT2020BL4	50cm x 50cm	2' x 2'	7mm	9.6kg	Tile	(pack of 4)	Black
TT2020BL9	50cm x 50cm	2' x 2'	7mm	21.6kg	Tile	(pack of 9)	Black
TT20BB	50cm x 7.5cm	2' x 3"	7mm	0.2kg	Bevel edge	(single)	Black

Our delivery promise

We guarantee your order will be shipped on time, every time. That's the Blue Diamond difference.

V6.03.24

Get in touch

+44 (0) 1779 841 899
sales@bluediamond.uk.com
www.bluediamond.uk.com

Tuff-Tile HD Textured



Code	Metric	Imperial	Thickness	Weight	Type	Per	Colour
TT20BB4	50cm x 7.5cm	2' x 3"	7mm	0.8kg	Bevel edge	(pack of 4)	Black
TT20BY	50cm x 7.5cm	2' x 3"	7mm	0.2kg	Bevel edge	(single)	Yellow
TT20BY4	50cm x 7.5cm	2' x 3"	7mm	0.8kg	Bevel edge	(pack of 4)	Yellow
TT20CB	5cm x 5cm	2" x 2"	7mm	0.1kg	Corner	(single)	Black
TT20CB4	5cm x 5cm	2" x 2"	7mm	0.4kg	Corner	(pack of 4)	Black
TT20CY	5cm x 5cm	2" x 2"	7mm	0.1kg	Corner	(single)	Yellow
TT20CY4	5cm x 5cm	2" x 2"	7mm	0.4kg	Corner	(pack of 4)	Yellow

Please note, all Imperial sizes have either been rounded up or down to the nearest whole number

Technical Specification

Slip resistant:	Great slip resistance to level 2
Anti-fatigue:	Good anti-fatigue properties, resistant to level 1
Wear resistant:	Excellent wear resistance to level 3, suitable for heavy footfall
Crush resistant:	Excellent crush resistance to level 3. Easily regains form
Soil resistant:	The pebble grip surface removes soil, dirt and grime to level 2
Chemical resistant:	Yes, resistant to most solvents and chemicals
Connectable:	Yes, the mats are modular and interlocking with bevelled edges to create ramps to all sides
Cut to size:	Yes, mat can be cut to bespoke sizes
Disability friendly:	Yes, the mats have ramped edges making them suitable for wheelchair users
Dry area:	Yes
Wet area:	Yes
Oily and greasy area:	Yes
Heavy area:	Yes
Wheeled area:	Yes, suitable for fork trucks, pallet trucks, stillages and heavy loads as well as for wheelchairs, pushchairs, and trolleys
Environment:	Suitable for indoor and outdoor use
Flame retardant:	Yes

Tuff-Tile HD Textured



Technical Specification

Forklifts: Yes

Impact resistant: Yes

Product testing:

- ◆ Fire classification Dfl-S1 tested according to DIN EN ISO 9239-1
- ◆ TUV load tested
- ◆ 3.35 tonne tyre test - load maintained for 2 hours / no sign of damage
- ◆ 2 tonne trolley jack test – load maintained for 2 hours / no sign of damage. After 18hrs showed deformation at the interface point, but returned to original state after 24hrs

Sustainability:

- ◆ Recyclable material
- ◆ REACH (Registration, Evaluation, Authorisation and Restrictions of Chemicals)
- ◆ RoHS (Restriction of Hazardous Substances)

Cleaning: Wash with cold water and a mild detergent. The use of harsh detergents is not recommended